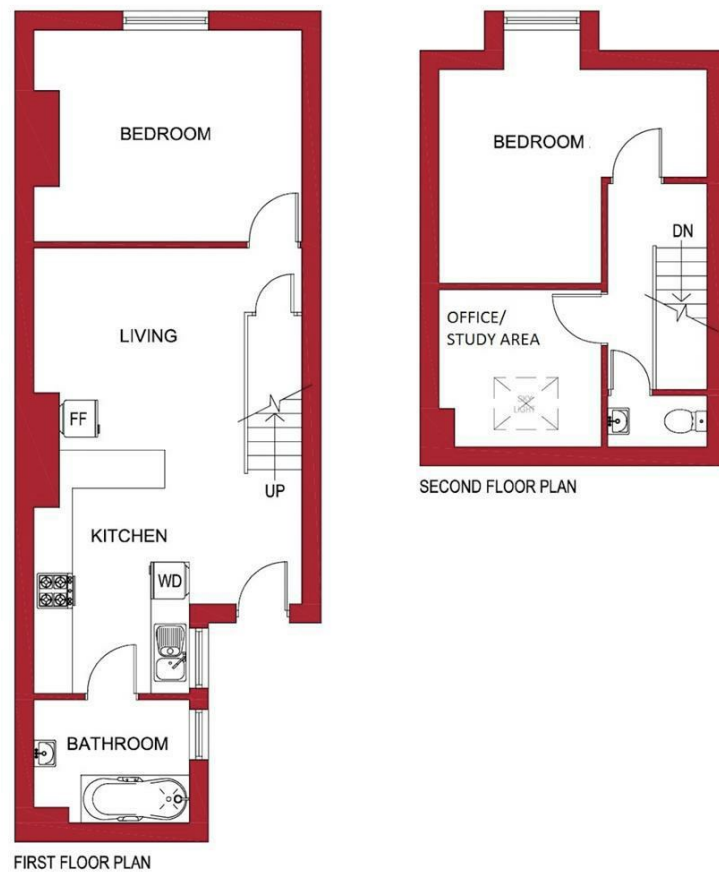


Viewings
 Viewings by arrangement only.
 Call 0114 2666300 to make an appointment.

Vendors Comments
 Add text here

Energy Efficiency Rating		Current	Potential
Very energy efficient - lower running costs			
(92 plus)	A		
(81-91)	B		
(69-80)	C		
(55-68)	D	56	67
(39-54)	E		
(21-38)	F		
(1-20)	G		
Not energy efficient - higher running costs			
England & Wales		EU Directive 2002/91/EC	

417A Ecclesall Road S11 8PG



417A Ecclesall Road, Sheffield, S11 8PG

£1,300 Per month

- Student: £150 per person per week
- Bills included option available at £188 per person per week
- Bills included option includes gas, electricity, fibre internet, TV licence and water bills
- Situated on Ecclesall Road
- Available for a group of 2
- Large open plan dining kitchen
- Well situated for Sheffield Hallam University
- Available from 1st July 2026
- Early viewing highly recommended to avoid disappointment
- Additional office / study room

417A Ecclesall Road, Sheffield S11 8PG

*** STUDENT *** £150 PER PERSON PER WEEK *** BILLS INCLUDED OPTION AVAILABLE AT £188 PER PERSON PER WEEK (Includes: Gas, electricity, fibre internet, water and TV licence) *** AVAILABLE FOR A GROUP OF 2 ***
A VERY WELL LOCATED, three bedroom TOP FLOOR APARTMENT with ACCOMMODATION OVER TWO FLOORS.
Ideal for STUDENTS studying at SHEFFIELD HALLAM UNIVERSITY and close to an abundance of local amenities. Situated in the HIGHLY SOUGHT AFTER location of ECCLESALL ROAD.
In brief the accommodation comprises: living room/kitchen, bathroom/WC, two bedrooms, additional office / study room and a bathroom/WC.
An early viewing is highly recommended to avoid disappointment!
EPC Grade D.



Council Tax Band: A

